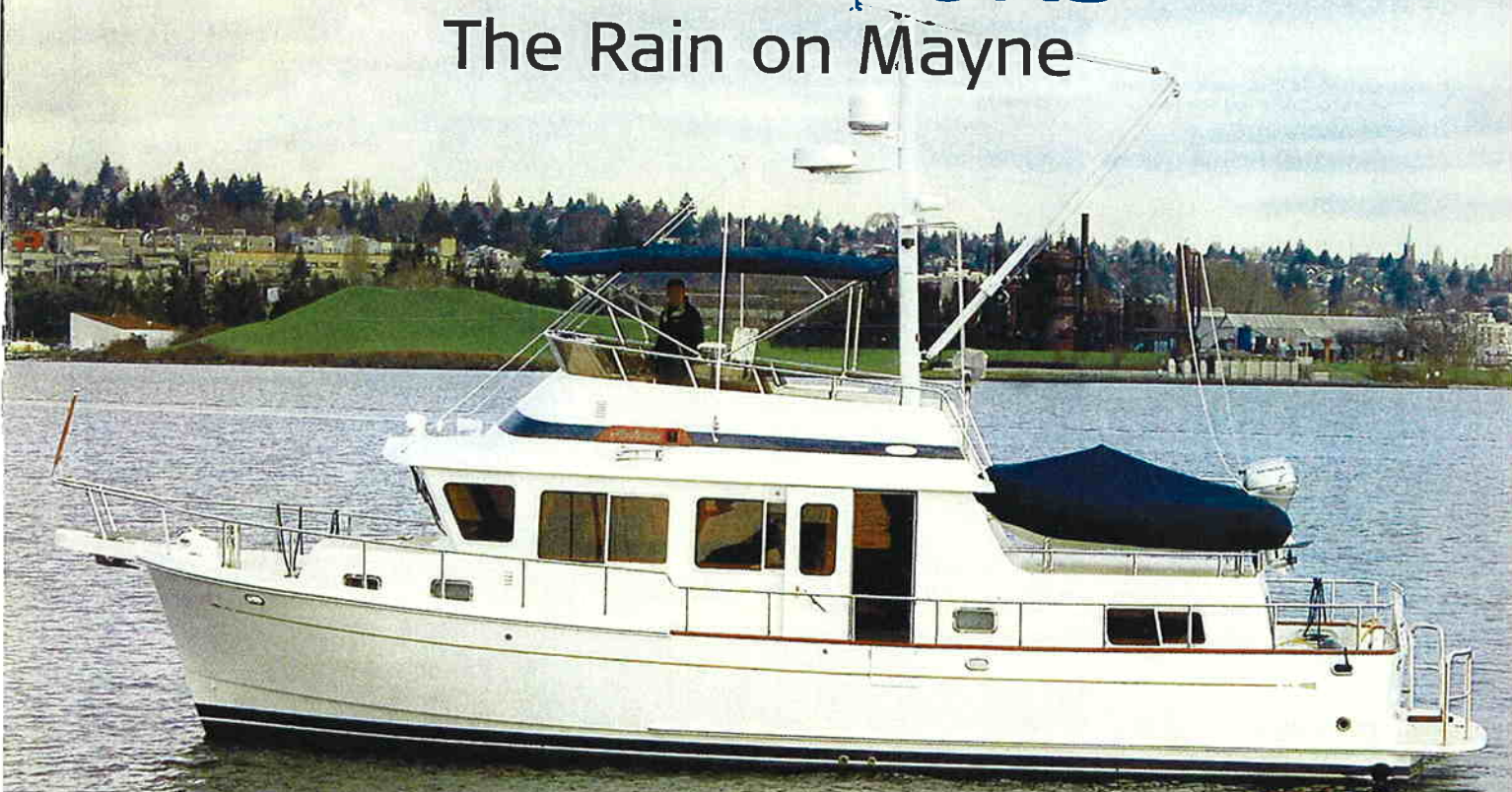


# Nor'westing

SERVING THE PACIFIC NORTHWEST BOATING COMMUNITY SINCE 1965

## DESTINATIONS

### The Rain on Mayne



#### SEA TRIAL

Selene 40

#### NW CLASSICS

Cascade 36 Trawler

#### AT THE RAMP

Hydra-Sports 2500 VX

#### AT FIRST GLANCE

Mariner 35 Seville Sedan

# Sea Trial



## Elegance, with a Touch of Salt

### SELENE 40

The boat market can be a puzzling place. People choose boats for a variety of personal reasons, and only some of those reasons will seem to make a lot of sense to others. Boats are sometimes purchased because they feature particular gizmos, gadgets, or novel accessories that have little practical use underway and contribute nothing to a vessel's seakeeping ability. The public is fascinated with all but automatic navigation, enormous TV screens in every compartment, Euro-boutique galley appliances, Space Shuttle toilets, and stylish but sometimes fragile fabrics. Surely the next accessory hailed as a major "advance" in the industry will be the electronic cocktail napkin dispenser, and boats featuring a dispenser on the flybridge and in the cockpit as well as one in the salon will be judged vastly superior to any boat with merely a single unit aboard.

While the majority of shoppers may be at risk of being unduly distracted by toys and accessories, there remains a small cir-

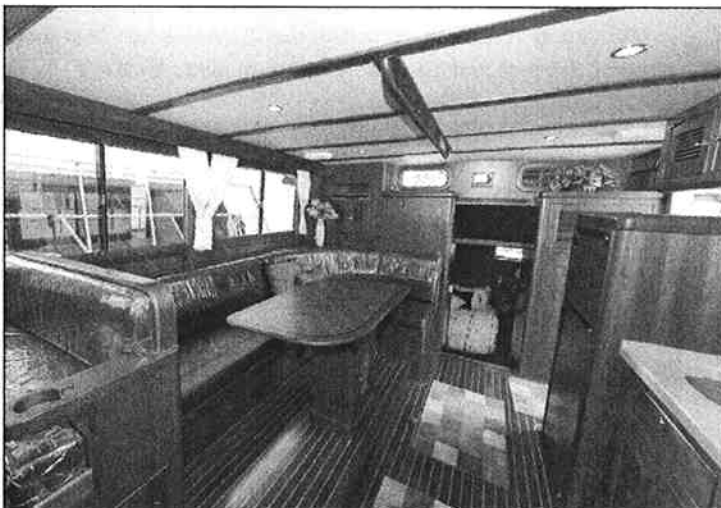


Selene 40.

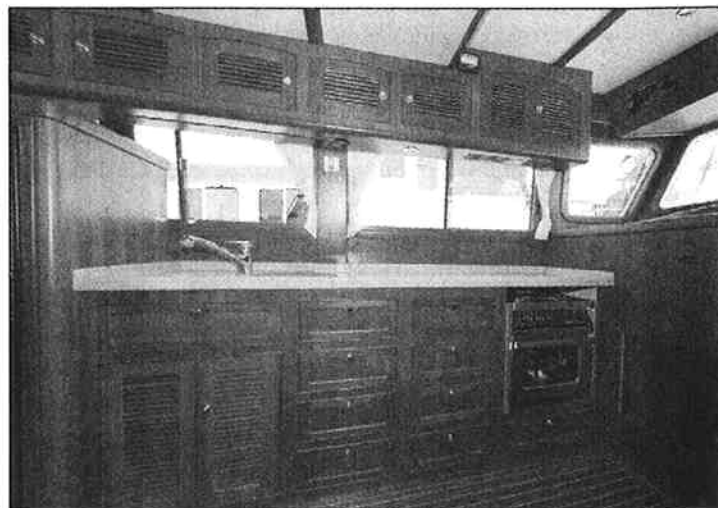
cle of experienced boaters who can be forgiven for asking, "Doesn't anybody know how to build a good, solid, boat for serious coastal cruising anymore? Something where the boat itself is worth owning, disregarding the gimmicks and gewgaws?" Fortunately, such vessels remain available. This month's featured boat, the Selene 40,

appears to be worthy of inclusion in that select group of powerboats likely to appeal to the more experienced and sea savvy mariners.

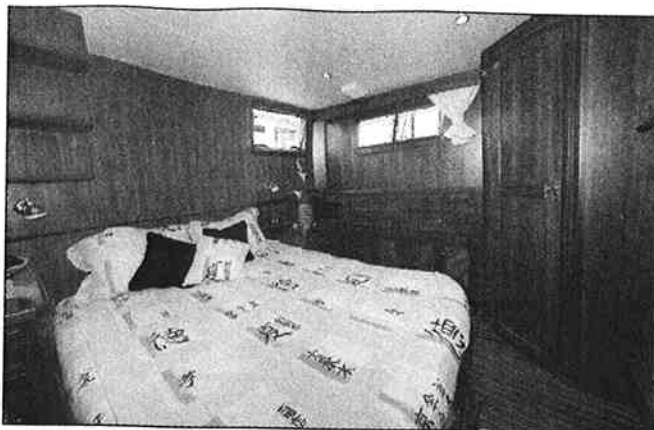
Selene Yachts are built by Jet Tern Marine in the Canton district of mainland China. Corporate chairman Howard Chen had a successful career as a naval architect



Spacious main cabin.



Practical and attractive galley.



Clockwise from top left:

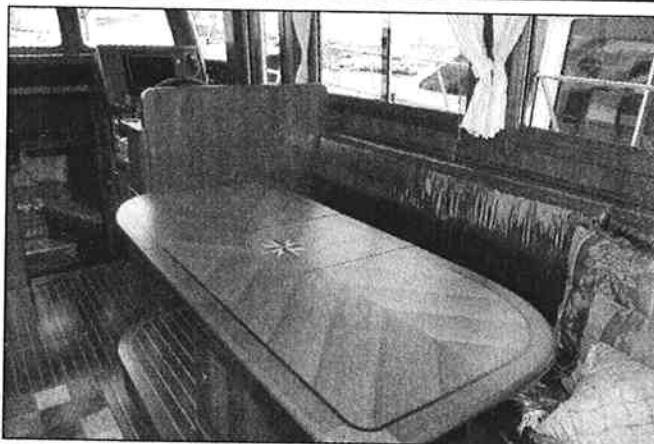
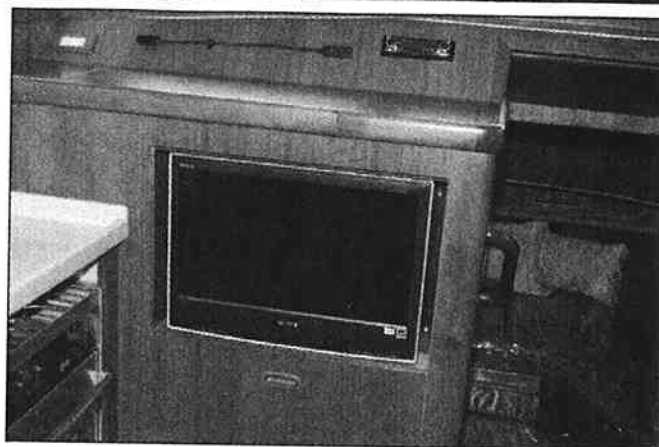
Electronics are seamlessly integrated into the lower helm.

Master stateroom is elegant by virtue of simplicity.

Video entertainment center is behind sliding panel below chart table.

Inlaid teak table extends for dining, collapses for snacks.

Bottle locker under the helm seat.



and production manager of a well-known Asian yacht builder before establishing Jet Tern in 1998. Selene Yachts may be in only the ninth year of production, but they are built in a cutting-edge facility with the benefit of additional decades of experience and commitment to quality. Howard Chen seems totally obsessed with perpetually improving the product; he is typically present at each Selene rendezvous in the Pacific NW and asks every owner, "How do you like your boat? What would you change about it if you could?" The information accumulated from hundreds of interviews with current owners allows Chen to continuously revise and fine-tune

the entire line of Selene trawlers.

Selene Yachts are represented in the Pacific NW by Selene Seattle (2046 Westlake Ave), a firm staffed by a group that consists of Brian and Sasha Calvert, as well as some of the most respected and seasoned yacht brokers in the region.

### GENERAL DESCRIPTION

Selene's 40-foot trawler is the second smallest offering in a family of a dozen boats that range from 36- to 72-foot LOA. The hull is of the semi-displacement variety, with very round bilges forward modulated by Selene's "disappearing chines" to resolve in a relatively flat after section.

The 40 is a single-engine design, with a pronounced keel and the prop protected by a skeg and rudder. The stem is moderately raked, and the sheer a single, continuous line to a vertical transom with a modest curvature. The superstructure is a traditional tri-cabin profile, with reverse-raked pilothouse windows. The long fly-bridge cowling, the standard mast and boom and the beefy profile of the main cabin's aft bulkhead suggest a hint of "workboat" styling: an image that sits rather well on the Selene 40.

### HULL LAY-UP

Selene uses traditional rove and resin